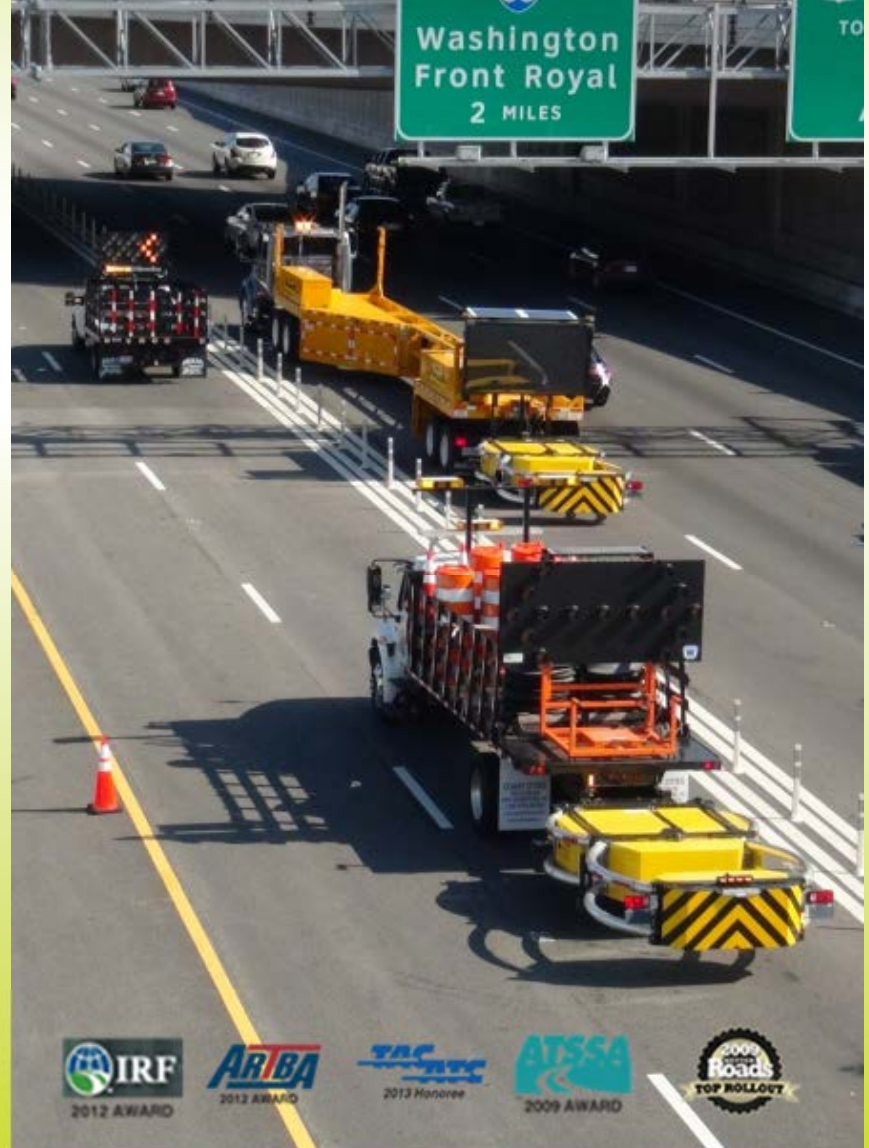




Highly Mobile Protection

Mobile Barriers MBT-1®

“Improving Safety, Efficiency & Traffic Flows In & Around Work Zones”



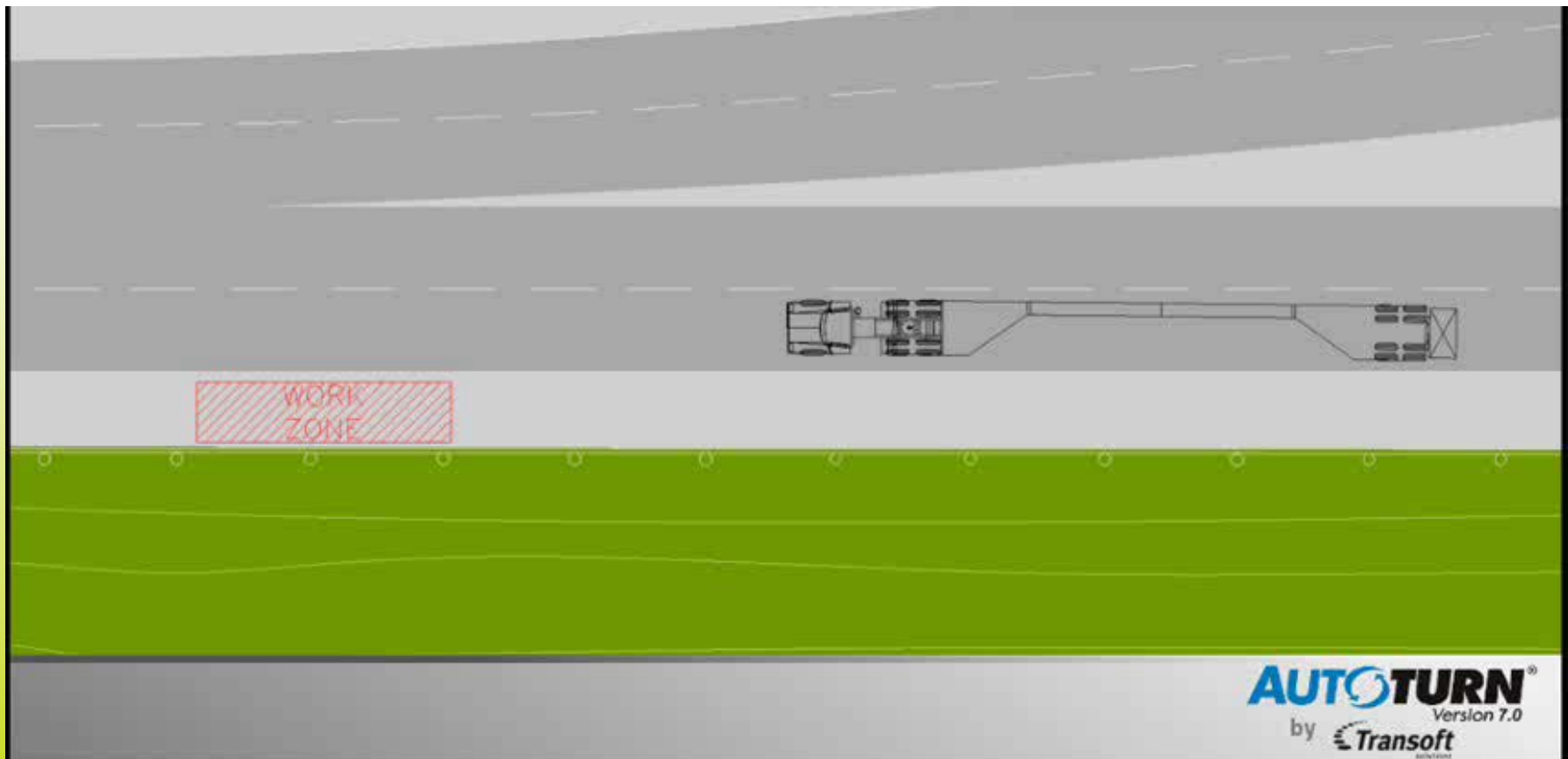
Overview

NBC-DFW... TxDOT



Features:

- **Modular - 13-31 m long (42-102')**
 - **1.5 m high walls (5')**
 - **Drives like a semi**



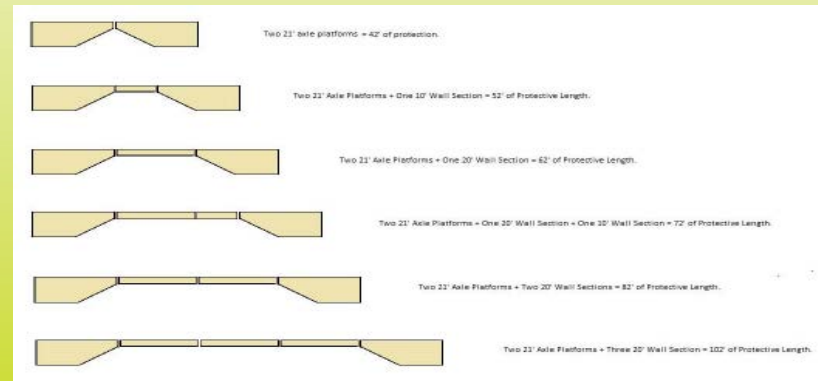
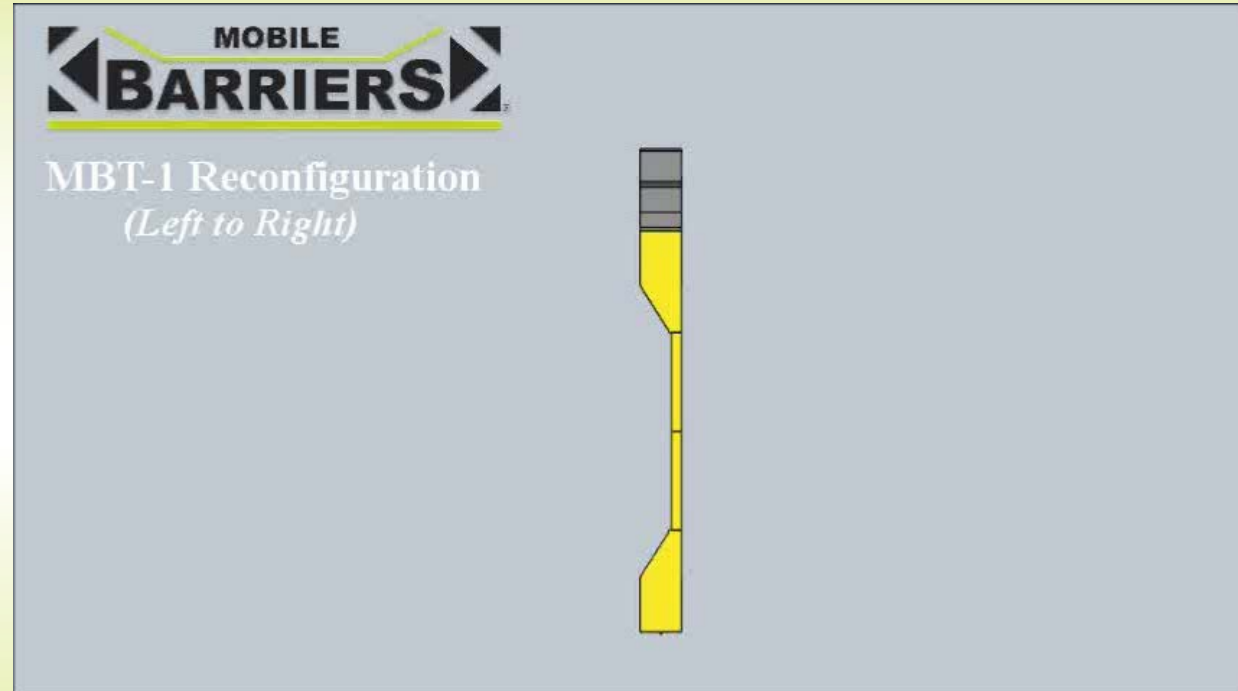
Features:

**Configure
Left or Right**

(move caboose)

Lengthen

(add wall sections)



Features:



Power

12/24v, 120/240v & Solar

Lights

Safety & Work

Storage

Internal & Decks



Features:



Signage
w/ Radar



TMA
Rear Crash Cushion

Rear Steer
(optional)





Safer:

- **Tested/Accepted**
(TL-3 NCHRP 350 & MASH)
- **Minimal Deflection**
- **Reduce Distraction**
(for workers & traffic)
- **Improve Traffic Flows**





Faster:

- **Drive in Place**
- **Reduce Setup**
(vs temporary concrete and other barrier)
- **Increase Production**
- **Relocate & Reconfigure Quickly**





Better:

- Complete Package
- Highly Mobile
- Less Collateral Equipment
- Reduce Number & Duration of Lane Closures

Mobile Barriers MBT-1... In Use

Safer – Faster – Better

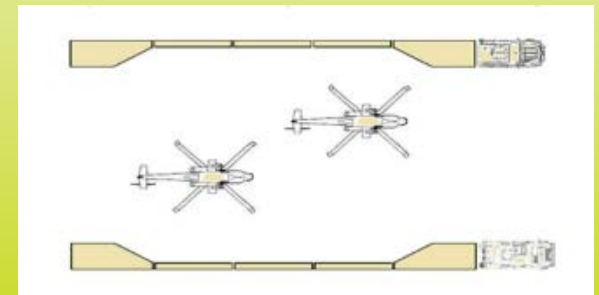
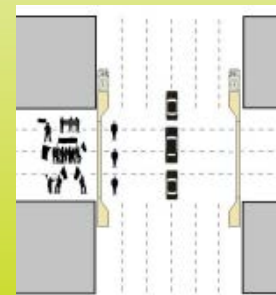
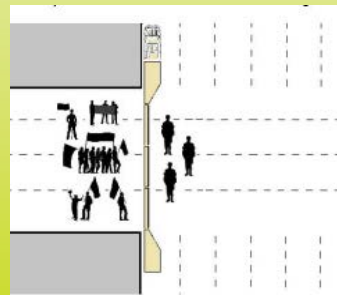
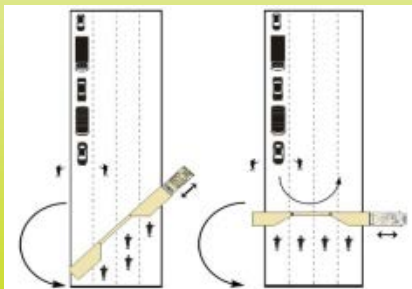


MBT-1... Other Uses

Highly Mobile Protection for Emergencies & Incident Management



Accidents, Emergency Closures, Spot Inspections, Check Points, Protected Areas & Rolling Perimeters.





Mobile Barriers MBT-1®

“Improving Safety, Efficiency & Traffic Flows In & Around Work Zones”



Mobile Barriers LLC | Denver Offices: 24918 Genesee Trail Road | Golden, Colorado USA 80401 | Phone +1-303-526-5995

www.mobilebarriers.com

info@mobilebarriers.com

MOBILE BARRIERS MBT-1 is protected under Pat. Nos. 7572022, 7901117, 8322945, 8465047, 8628110, 8657525, 8740241, NZ 590357 and other patents pending.
MOBILE BARRIERS & Design and MBT-1 are Registered Trademarks. © 2007-2014 Mobile Barriers LLC. All rights reserved.
CAGE Code: 70N96